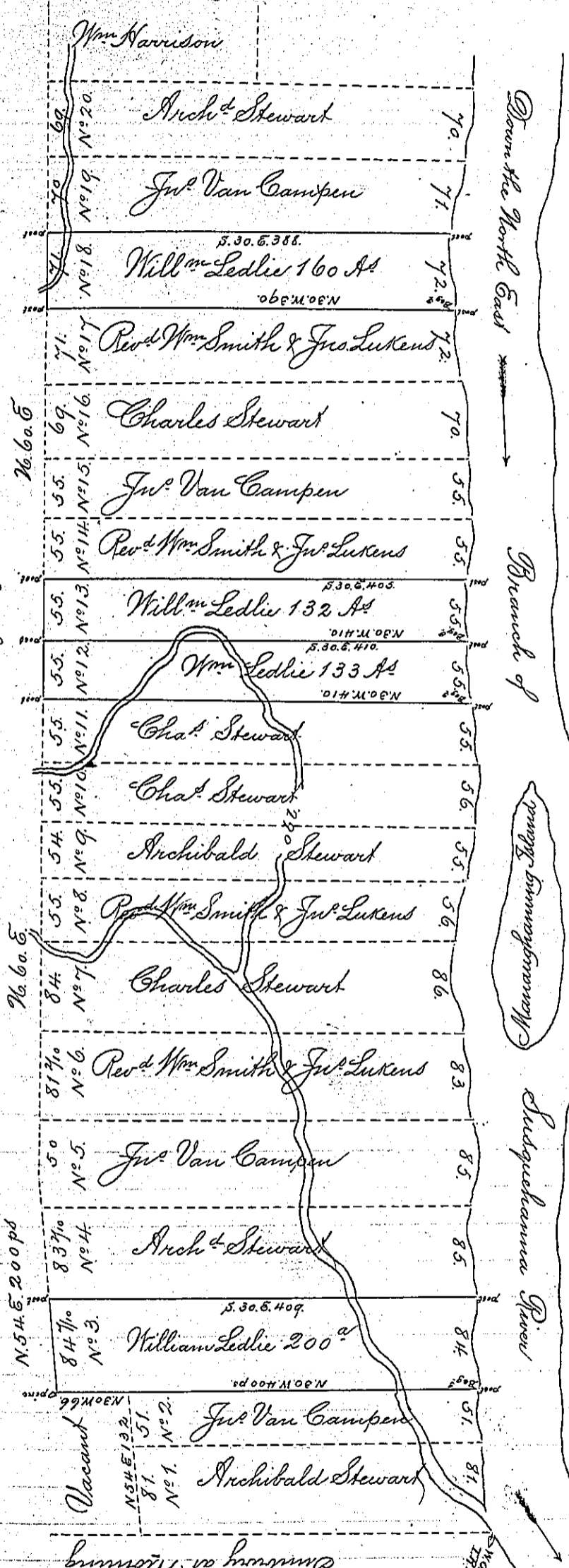


48

A Mountain North Sixty degrees East



IN TESTIMONY that the above is a copy of the original remaining on file in the Department of Internal Affairs of Pennsylvania, made conformably to an Act of Assembly approved the 16th day of February, 1833, I have hereunto set my Hand and caused the Seal of said Department to be affixed at Harrisburg, this fourth day of September 1890.

James Patta Secretary of Internal Affairs.

The Out Lines of the above Draught Represent the Survey of 3098 Acres of Land called "Branch and Main" made for Andrew Allen Esq. on his Special Application No. 7, dated the 4th day of February 1769. Situated on the West side of the North East Branch of Susquehanna River adjoining the Proprietaries Manor of Sumbury at Warrington. Who by Deed bearing date the 20th day of December 1772. Conveyed the same to Turbutt Francis Esq. Who obtained a patent for 2037 Acres & 96 p^t thereof bearing date the 24th day of February 1774. And also One other patent for the remaining 1060 Acres & 64 p^t bearing date on the 14th day of June 1774 and is to convey the same to the above mentioned persons, according to the partition lines laid down in the above Draught to wit, To William Ledlie No. 3. Containing 200 Acres, and Allowance of Sipp. Cnd. for roads, No. 12. Containing 133 Acres & 13 p^t. No. 13. Containing 132 Acres & 13 p^t. No. 14. Containing 2037 Acres & 96 p^t. And No. 18. Containing 160 Acres, and Allowance.

Drawn in the Surveyor Generals Office
Jno Van Campen & Jno Lukens